

# PRO RYDE<sup>®</sup> SUSPENSION SYSTEMS

EXACTLY THE WAY YOU WANT IT.™

## 3-in-1 REAR SPRING BLOCK KIT INSTALLATION

2019+ Ford Ranger

PATENTED

### IMPORTANT!

Read ALL WARNINGS and information contained in these instructions PRIOR to installing this product. Vehicle Owner MUST be provided the IMPORTANT VEHICLE OWNER'S INFORMATION section of these instructions after installation of this product.

#### Bill of Materials

- (1) Installation Instructions & Warnings
- (2) Interlocking 3-in-1 Cast Iron Blocks
- (4) OEM Grade U-Bolts
- (8) OEM Grade Nuts & Washers



#### ALWAYS WEAR PROPER EYE PROTECTION & USE TOOLS SPECIFIC TO THE JOB!

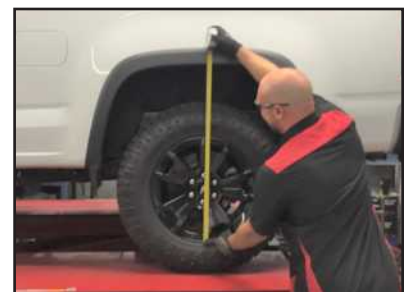
**IMPORTANT! THIS IS A PATENTED INTERLOCKING SYSTEM AND SHOULD NEVER BE STACKED OR USED WITH ANY OTHER LEAF SPRING BLOCKS AS IT MAY CAUSE AN UNSAFE CONDITION FOR BOTH THE INSTALLER & THE VEHICLE DRIVER.**

**STEP 1:** Position vehicle on a stable, flat surface or automotive lift. Be sure engine is turned OFF and vehicle is in PARK. Secure vehicle with wheel chocks.



**STEP 2:** On a flat, level surface, MEASURE preinstallation ride height, FRONT & REAR, and write down measurements.

Front (L) \_\_\_\_\_  
Front (R) \_\_\_\_\_  
Rear (L) \_\_\_\_\_  
Rear (R) \_\_\_\_\_



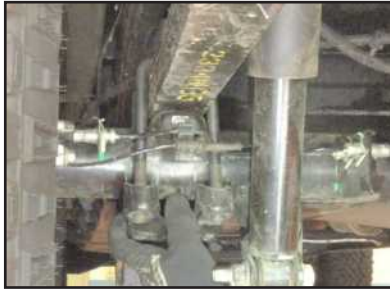
**STEP 3:** Raise the rear of the vehicle by the frame. Secure with jack stands.



**STEP 4:** Support axle with secondary jack.



**STEP 5:** Remove the four U-bolt nuts and washers on each side of the vehicle, and remove lower U-bolt axle brackets.



**STEP 6:** Remove OE U-bolts, and the lower shock fasteners, if required.



**STEP 7:** Lower axle to allow enough space for the new block kit to be installed.



**STEP 8:** Install desired amount of lift. Make sure alignment pins line up with spring and axle perch while raising axle. Make sure **FRONT** marking on block is facing **FRONT** of vehicle. 2" interlocking block assembly shown here.



**STEP 9:** 1" block option shown here.



**STEP 10:** 1.5" block option shown here.



**STEP 11:** Install new Ubolts provided with the kit. Install spring bracket and install washers and nuts.



**STEP 12:** Progressively torque Ubolt nuts in a crisscross pattern to Factory specs.



**STEP 13:** REPEAT STEPS 5 THROUGH 12 ON OTHER SIDE OF THE VEHICLE. Carefully follow each step of these instructions as you did on the first side of vehicle!

**STEP 14:** Perform a complete wheel alignment, utilizing a Certified Alignment Technician with experience working on lifted vehicles.



**STEP 15:** ADJUST HEADLIGHT AIM to accommodate new ride height position.

**STEP 16:** Check and retorque Ubolt fasteners after 500 miles, and inspect regularly during routine maintenance.

**Before:**



**After:**



**IMPORTANT! Check all fasteners for proper torque. Check to insure there is adequate clearance between all rotating, mobile, fixed and heated members. Check steering for interference and proper working order. Test brake system.**

Complete a full 4-corner lift and install a PRORYDE LiftMachine front Level/Lift Kit!



## IMPORTANT VEHICLE OWNER'S INFORMATION

**2019+ Ford Ranger**

### **3-in-1 REAR SPRING BLOCK KIT**

#### **PATENTED**

#### **WARNING**

**This product should only be installed and adjusted by an ASE certified professional mechanic with proper tools and safety equipment.**

Installation of this product modifies vehicle ride height. The driver of this vehicle should avoid unnecessary or abrupt maneuvers, sharp turns and other driving conditions that could lead to rollover or other serious accident. This product will affect vehicle center of gravity resulting in less than the original OE stability characteristics.

The manufacturer of this product releases itself from any liability or consequence, inclusive but not limited to personal injury, failure of components or damage to vehicle or person as a result of installing this product.

**Check and re-torque U-bolt fasteners after 500 miles, and inspect regularly during routine maintenance.**

Warranties may be declined for any parts installed by any person other than an ASE certified professional. No warranty will be made for any other OEM or aftermarket components that may be affected by the installation of this product either in use or during installation. This kit is intended for use on stock suspensions WITHOUT any previous modifications whatsoever. Installation of this kit in conjunction with other aftermarket products will be done at vehicle owner's own risk, and voids any and all warranties.

Installation of this part MAY limit or void some vehicle manufacturer's warranties!

**ALWAYS DRIVE SAFELY, REDUCE SPEED, AND WEAR YOUR SEAT BELT.**

#### **LIMITED LIFETIME WARRANTY**

This product is warranted to be free of defects in materials and workmanship to the original purchaser on the vehicle in which it is originally installed. This warranty does not cover loss of time, labor, or any other components as a result of damage. This warranty may be void if this product is installed by any person other than an ASE certified professional.